

User Manual Addendum

# TeleType GPS

Satellite Tracker System

TeleType Part #1417

Revision 1.2  
*January 15, 2007*

TeleType Co. Inc.  
[www.teletype.com](http://www.teletype.com)

Thank you for purchasing the TeleType GPS Satellite Tracker. Please refer to the enclosed user manual for detail regarding the use of the program. This document explains the initial procedure to set up the SatelliteTracker.

## Hardware Install

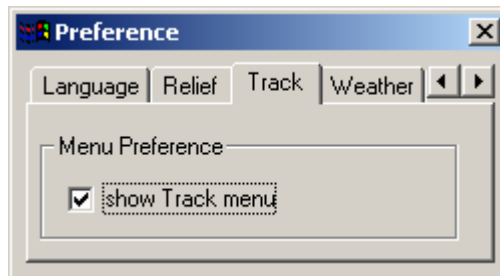
1. Provide proper power source (the Tracker accepts 12v-28v).
2. Position unit with unobstructed view of the sky.
3. Note that the STAT (ie status) light should blink.

## Software Install

1. Insert TeleType GPS CD.
2. Wait for the “splash screen” to appear.
3. Click “Install Program”
4. Follow screen prompts to install to default location on your desktop or laptop computer.
5. Go back to “splash screen”
6. Click “Install Maps” - select appropriate maps

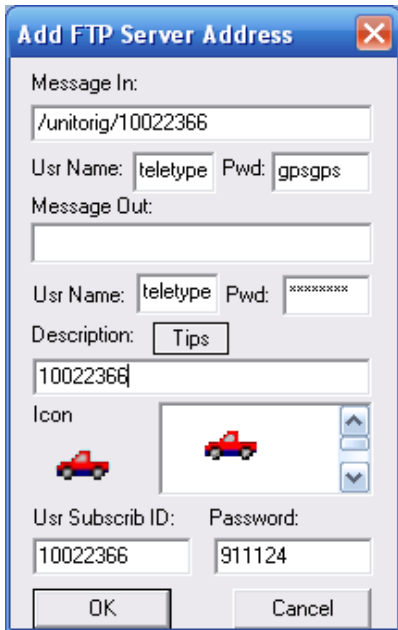
## Software Setup

1. Activate TeleType GPS program
2. Select File Load Maps (browse to the folder that contains the set of state maps you wish to load). Select All (use CTRL A to select all maps at one time). Use zoom in/out to see street maps. (See the TeleType GPS User Guide found on the installer CD and also found on the TeleType website under “Technical Support>Documentation” for details about the mapping software.
3. Activate Track Menu: Select View>Preferences>Track
4. Select show Track menu and close the window.



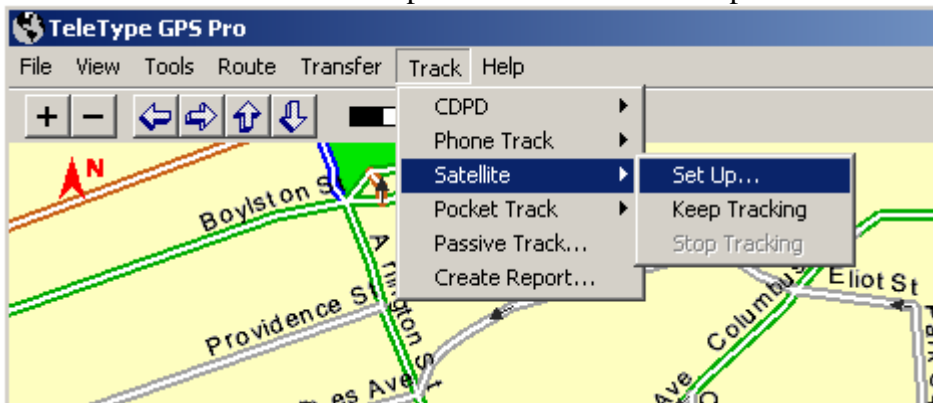
*Activating Track Menu*

5. Select Track>Satellite >Setup>Add
6. Message In: /unitorig/10022367
7. Usr Name: teletype
8. Pwd: gpsgps
9. Message Out: leave this area blank
10. Usr Name: teletype
11. Pwd: gpsgps (or leave it blanked out as shown)
12. Usr Subscrib ID: 10022367 [number changes if you purchased more than one unit]
13. Password: 911124
14. Click OK



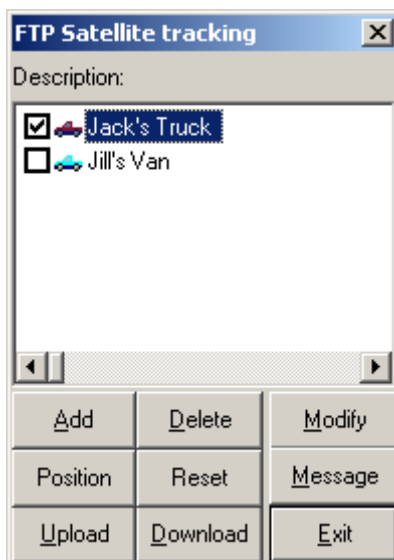
### TeleType GPS Satellite Tracker Menu Description

The section above describes in detail how to set up the Satellite Tracker portion of the TeleType GPS software. Further detail is provided with the screen prints shown below.



Opening the Satellite Tracker Setup window

**Setup** – This will bring you to the setup screen described below.



**Keep/Stop Tracking** – These two menu options will turn on and off the tracking system. Once one or more users are being tracked, “Stop Tracking” will be highlighted and “Keep Tracking” will not be highlighted.

**Note** – If you open the Waypoint window tracking of any users will be suspended until the window is closed again.

Use the Satellite Tracker Setup window to configure the Satellite Tracker system. Each line with a check in the box will be tracked by the software.

**Add** - Allow you to add an additional Satellite Tracker user for the system to track. See the setup instructions for how to add a user.

**Delete** – Delete a user from the list.

**Modify** – Modify the information for the selected user. This will allow you to change the description of a user, the frequency of the updates on their position, and the resolution of their position.

**Position** – Sends a position file to the FTP server, so the user can receive it.

**Reset** – Deletes the currently loaded trace file for the selected unit, the next time you click download after clicking reset, it will re-download the entire waypoint file for the selected user.

**Message** – Send a short message to be read by the user.

**Upload** – Sends a message file from your computer to the user.

**Download** – Downloads and displays the trace information for all checked users. If you already have some data for a user, the program will only download new points from that user.

**Exit** – Exit this window.

\\T1842\C\TeleType GPS Documentation\1405 SatelliteTracker\SatelliteTracker\_Manual.doc